

# Hiranyagarbha / Golden Womb

## Visual Arts Gallery

Though not a newcomer to the exhibition circuit, prolific Seema Kohli has only recently been garnering recognition for her work. That's probably due to her relatively introverted relationship to her art. These ornate paintings are genuinely introspective.

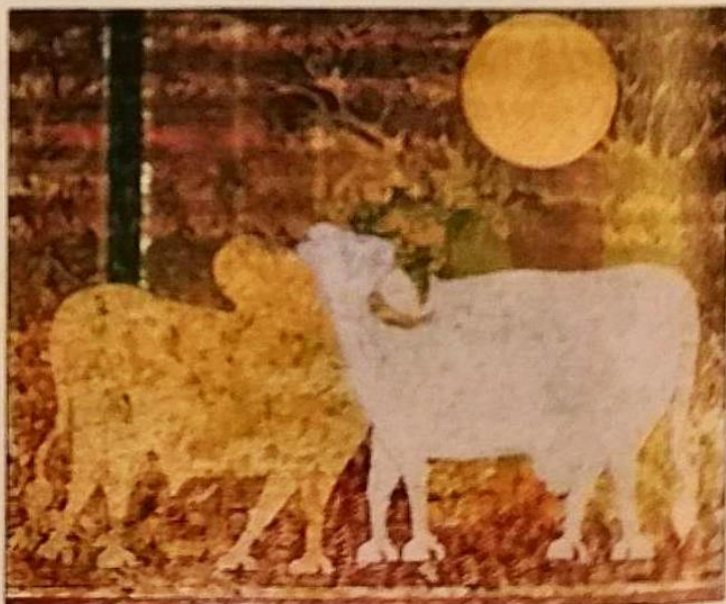
Influenced by mythology and philosophy from various traditions, these works are a mix of abstract and figurative painting. While the style has a tendency to slip into rambling doodles, a detail here or an overall structuring form there suddenly demonstrates Kohli's ability.

Kohli weaves figures and detail on bright but monochromatic, intensely-patterned fields of colour. Sometimes her canvas looks like collages of block-printed cloth; at others, as if the artist went crazy with a mehndi cone.

Kohli's strength is her patterning and patience with her work.

You get the feeling that, for her, the process of creating the painting is far more important than exhibiting it. Each layer adds another train of thought to the theme of the canvas. And Kohli holds a firm grip over all these intricate thoughts, homing in on a bigger picture that transcends each pattern. She says the detailed patterns stand for layers of subconsciousness and the strong lines for "action" or "karma".

This is a big show of Kohli's work, which she says is her way of meditation. It's nice that she presumes no more and no less. SS



*"Untitled"*